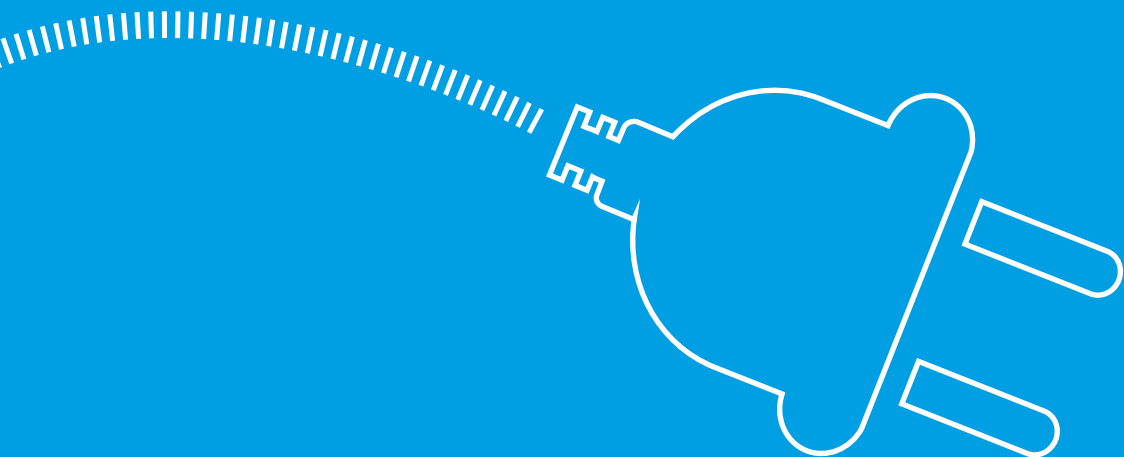




FURNITURE POWER SOCKETS

ergonomics and functionality





When designing and furnishing a suitable workspace, we need to consider several factors: who will be using the space, how often and in what way. In addition to choosing a desktop, chair and lighting, it is important to ensure the availability of electrical sockets. It is their location that determines the arrangement of the work space.

The solution is to install modern through-desk power outlets in the desktops.

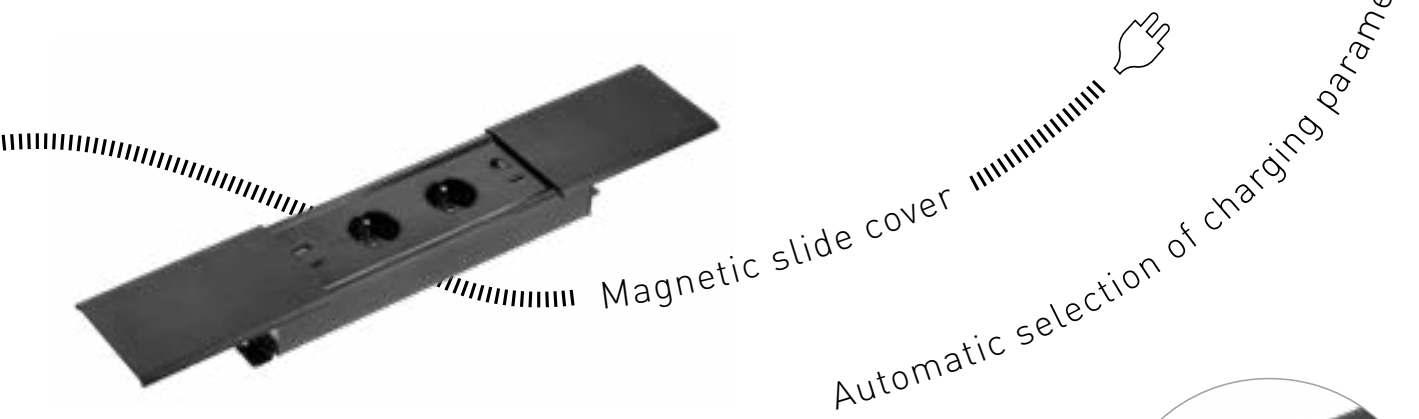
Aesthetically finished recessed power strips become part of a desk, conference table or kitchen counter top. They blend in with the worktop without taking up any space. They are fitted with elegant and subtle pop-up covers to protect the sockets against flooding and dirt. Once closed, the outlets become invisible.

The through-desk power strips bring a new quality to a space. They increase work comfort and ergonomics in the corporate or home office. GTV Lighting offers modern and convenient pull-out power sockets for any type of worktop – kitchen, table, desk and many others. They are all equipped with additional USB-C ports.



**pull-out
power socket**

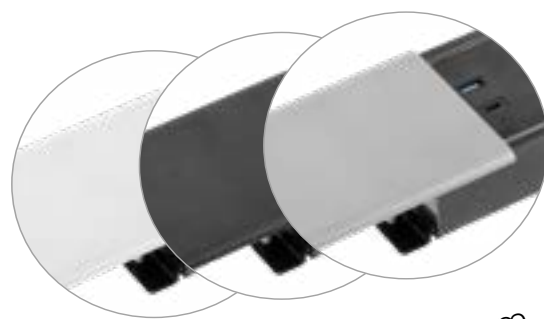
PRESTINO



Schuko/French power outlets max 16 A



Available ports: USB-A, USB-C, HDMI 2.0, RJ45 CAT.6



Three colour versions: white, black, aluminium

The practical and elegant design increases the comfort of your work. Prestino outlet is equipped with a sliding magnet shield to protect the sockets against moisture and dirt. Looks great with any worktop, creating an almost seamlessly smooth surface. Perfect for office desktops, meeting rooms, showrooms, shops and hotels. It will prove useful wherever aesthetics are important. The three finish colours – white, black and aluminium – will go well with black, grey and brown desktops as a desk accessory.



**pull-out
power socket**

CAMINO



10 W wireless charger



Night light function



Additional voltage switch in outlets



The most versatile USB-A and USB-C ports



Colour variants: white and black

The Camino through-desk power strip is an example of ergonomics and minimalism. Does not take up much space, so it is perfect for small tables and students' desks. The night light function will especially appeal to "night owls". The solution will also work well in the kitchen when preparing meals. The Camino pop-up power outlet is convenient to use – just pull it upwards until the bottom part locks into place. Inductive chargers are already becoming the standard. That is why Camino pull-out power socket has one, too.



**pull-out
power socket**

AVARO

Compact size



Wide range of colours: white, black, aluminium

Inverted mounting possible



The small, compact through-desk outlet is a perfect solution for small spaces, meeting the need for the most important power sockets. Avaro can be fitted in home desks, kids' rooms, or kitchens. Inverted mounting for overhead cabinets and side mounting for cabinet sides and kitchen islands available.



**pull-out
power socket**

AVARO PLUS



Compact size

Wide range of colours: white, black, aluminium

Versatile USB-A and USB-C ports



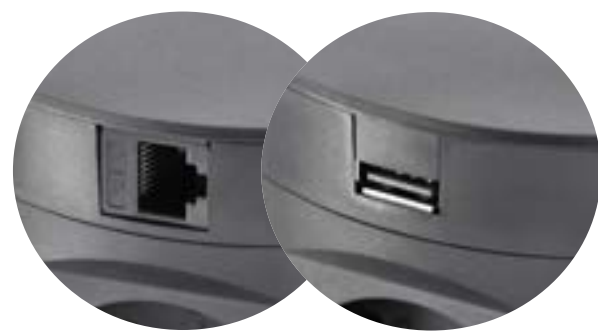
5 W wireless charger

The stylish Avaro Plus pop-up outlet is an extended version of the Avaro socket. Also features an inductive charger, eliminating the need to plug a traditional charger into your phone. Avaro is therefore great for long hours working at your desk, especially if you use your phone a lot. This solution will be particularly appreciated by people working long office hours from home. Avaro Plus can also successfully find its place in hotels, shops and at universities. Finished in black, white and aluminium. Easy to choose a colour to match your desk.



**pull-out
power socket**

COMFORT PLUS



SOFT OPEN system



2 x RJ45 and 2 x USB-A sockets

Multifunctionality thanks to 2 x RJ45 and 2 x USB-A sockets

Charging start beeper

Network cables integrated in the outlet

5W wireless charger



Can maximum ergonomics go hand in hand with design? The Comfort Plus pop-up power socket proves that this is not only possible, but necessary. The circular socket with an inductive charger on top significantly improves the quality of work, which is enhanced even more thanks to the start of charging beeper signal. What is more, Comfort Plus ergonomic size significantly saves your desktop space. When closed, the socket does not take up any space and blends discreetly into the tabletop surface. Equipped with a shock absorber, the socket slides out automatically and smoothly. (SOFT OPEN).



**pull-out
power socket**

CHARGER PLUS



5 W inductive charger with beeper



Interchangeable USB-A, HDMI, RJ-45 ports

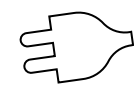
Extra low profile for mounting above a drawer

The easy-to-use, minimalist Charger Plus socket is designed for all kinds of desks and worktops, e.g. in the kitchen. The very low profile allows for comfortable blending into the tabletop. The Charger Plus socket features an inductive charger on the inside of the lid. Just lift the lid to charge your phone. It has three interchangeable sockets that make it a versatile solution for a co-working area.



**pull-out
power socket**

COMFORT



Intuitive and very fast installation



Space-saving storage under the desktop

Large number of sockets: 3 x AC and 2 x USB-A



The Comfort through-desk power socket can be applied universally in private and commercial spaces, such as offices, conference rooms, studios, shops or hotels. Assembly is very easy thanks to the detailed and clear instructions.

The user can choose a variant with or without two 5V/2A USB ports. The socket easily retracts into the worktop after installation. The silver finish adds elegance, discretion and originality.



**pull-out
power socket**

CHARGER

Quick and intuitive installation



Stylish cover cap

Additional USB-A port



Compact, minimalist design for anyone who appreciates space. The Charger through-desk power socket is designed for small desks, and so it is especially dedicated for kids, students, tables, wherever every scrap of space is important. When you have finished working, simply close the lid.

Easy to install. In addition to the power socket, users get a USB port for charging mobile devices at 5 V/2 A.



**pull-out
power socket**

CHARGER MINI

Compact size



USB charger remains accessible when lid is closed

The mounting hole is only 60 mm

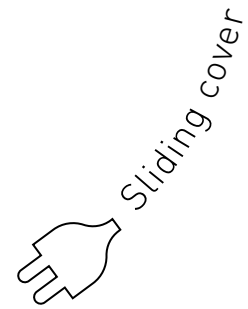


The compact socket that will come in handy on small surfaces, such as desks and tables in students' rooms. It will work well in other settings as well, such as the kitchen tops or hotel rooms. The Charger Mini socket is easy to install. Simply drill a 60mm diameter hole.



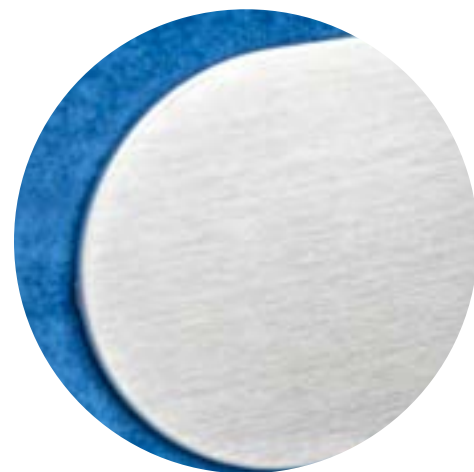
**pull-out
power socket**

SLIDE



USB socket for charging mobile devices 5 V / 2.4 A

Brushed steel finish



Small, stylishly designed socket will work well in exposed places, such as office and conference tables or even bedheads. The brushed steel finish adds an elegant touch. One power socket and a 5 V/2 A USB port available. After unplugging, simply slide the cover to close the socket, which will blend in perfectly with the worktop surface.



Mounting hole fi 60 mm

Power cord - 190 cm

pull-out power socket

Ø 60

Saves space



Available in 2 colours: black and silver

Mounting hole fi 60

Pull-out through-desk power socket strips are among the most popular solutions on the market. They are suitable for tight spaces – small desks, tables, or kitchen worktops. When pulled out, this power strip has three power sockets and two USB ports for charging mobile devices. Finished with a stylish cover. Available in two universal colours: black and silver.



pull-out power socket

Ø 100

Stylish chrome cover cap



- The most popular office solution
- Available with Schuko and French outlets
- Mounting hole fi 100 mm

Wherever there is no need to calculate every inch of space, a slightly larger version with a diameter of 100 mm can be used. When pulled out, three power sockets are available. Finished with a stylish cover. Available in two universal colours: black and silver.



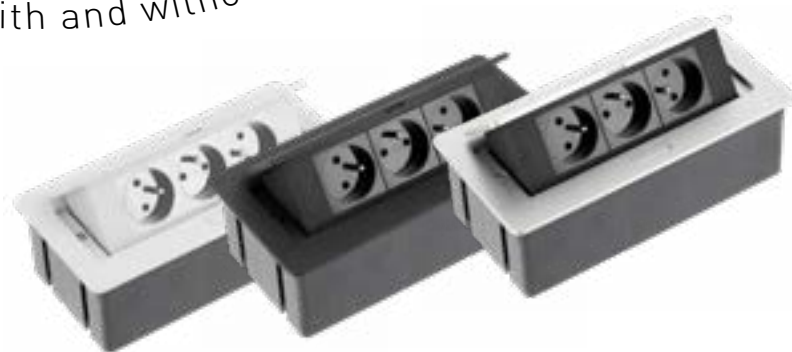
pull-out power socket

SOFT

SOFT TOUCH finish



Comes with and without USB-A port



Wide range of colours: white, black, aluminium

No collision with 3 angle AC plugs

The SOFT through-desk power strip is the most popular recessed socket model in the GTV offer. Thanks to its versatility, it is suitable for all types of worktops: in the kitchen, the office and the living room. Available in three colour options: white, black and silver. Pleasant to the touch satin finish makes the SOFT power strip even more stylish and improves your working comfort. A big advantage is the asymmetrical arrangement of the sockets, so that there is no problem with connecting three angled plugs at the same time.



**pull-out
power socket**

rectangular



Integrated 150 cm power cord

Available with USB 5V 2A port



Reliable design

The classic rectangular recessed socket will be a great solution for minimalists and all people who value simplicity. Invisibly blends in with the surface of any desk or table. It is available in standard colours to match most worktops: white, black and aluminium. The product comes with 3 power sockets or 2 power sockets and 2 USB-A ports.



**pull-out
power socket**

through-desk



Flexible letterbox brush



Can be closed without disconnecting the devices

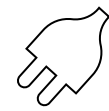
USB 5V 2A port

This is the most common type of power socket strip used in offices. Thanks to its flexible letterbox brush, it can be closed without disconnecting the devices it powers. This allows for comfortable work and placing e.g. a projector or a computer on the power strip. When closed, it allows for keeping the workspace in perfect order. Holds power sockets and USB ports for charging mobile devices.



**pull-out
power socket**

corner



Power cord - 150 cm

- Includes over-voltage and over-heat protection
- Can be installed in cabinets without loss of space
- USB 5V 2A port



An angled power socket strip perfect for spaces where it is not possible to recess the power strip in the desktop. It gives us a lot of wiggle room and is recommended to fit under cabinets, in the corner of a room or even inside cabinets. The tilted angle makes the socket easy to access. Available in aluminium with a black panel. The product is available with 3 and 4 power outlets. USB ports for charging mobile devices.



wireless
charger

LUX

Power cord - 150 cm



Stylish chrome finish

Suitable for worktops up to 32 mm thick

Power 10 W

The wireless charger is a very useful device in the office and at home. This modern, elegant model from our offer is a convenient way to charge mobile devices in any conditions. Its undoubted advantage is the stylish finish, which makes the charger a decorative element of the tabletop. This contributes to maintaining spatial order, especially in exposed, representative areas such as conference room tables, meeting places for business clients, or modern offices and public areas such as museums and galleries.

Details can add prestige and comfort.



wireless charger hidden

Power cord - 150 cm



Installation without damaging the desktop

Power 10 W

The wireless charger that is hidden under your desktop is a great solution for minimalists who do not like a lot of electrical devices on top and appreciate modern ideas. Such positioning of the charger frees us space available on the desk and any device can be charged by placing it over the desktop, above the charger.

An additional advantage of the charger is that you do not have to drill through the tabletop to install it. Easy and comfortable to use.



wireless charger USB



Wireless and traditional USB-A charging

USB 5V, 2.1 A port

Wireless charging power of 10 W

Universal inductive charger with an additional USB port so that you can connect any device, such as a desk lamp, a second phone, a tablet, or a charger for wireless headphones. This additional feature makes it a very versatile device that facilitates your daily work.



furniture power socket / charger	indeks	socket type	max permissible load	wireless charger	USB	additional slot	power cord	color
PRESTINO	AE-PB2FPRES-20	2 x french	3500 W	-	USB-A USB-C	1 x RJ45 1 x HDMI 2.0"	150 cm	black
	AE-PB2SPRES-20	2 x schuko						
	AE-PB2FPRES-53	2 x french						aluminium
	AE-PB2SPRES-53	2 x schuko						
	AE-PB2FPRES-10	2 x french						white
	AE-PB2SPRES-10	2 x schuko						
CAMINO	AE-BPW2FCAM-20	2 x french	3500 W	10 W	USB-A USB-C	-	150 cm	black
	AE-BPW2SCAM-20	2 x schuko						
	AE-BPW2FCAM-10	2 x french						white
	AE-BPW2SCAM-10	2 x schuko						
AVARO	AE-PB1FAVA-20	1 x french	3500 W	-	2 x USB-A	-	150 cm	black
	AE-PB1SAVA-20	1 x schuko						
	AE-PB1FAVA-53	1 x french						aluminium
	AE-PB1SAVA-53	1 x schuko						
	AE-PB1FAVA-10	1 x french						white
AVARO PLUS	AE-PB1FAVAP-20	1 x french	3500 W	5 W	USB-A USB-C	-	150 cm	black
	AE-PB1SAVAP-20	1 x schuko						
	AE-PB1FAVAP-53	1 x french						aluminium
	AE-PB1SAVAP-53	1 x schuko						
	AE-PB1FAVAP-10	1 x french						white
	AE-PB1SAVAP-10	1 x schuko						
COMFORT PLUS	AE-BPW4F120P-20	4 x french	3500 W	5 W	2 x USB-A	2 x RJ45	150 cm	black
	AE-BPW4S120P-20	4 x schuko						
	AE-BPW4F120P-10	4 x french						white
	AE-BPW4S120P-10	4 x schuko						
CHARGER PLUS	AE-BPW1FACP-20	1 x french	3500 W	5 W	USB-A USB-C	1 x RJ45 1 x HDMI 2.0 1 x USB-A	150 cm	black
	AE-BPW1SACP-20	1 x schuko						
	AE-BPW1FACP-10	1 x french						white
	AE-BPW1SACP-10	1 x schuko						
COMFORT	AE-BPW3S100U-53	3 x schuko	3600 W	-	2 x USB-A	-	190 cm	aluminium
	AE-BPW3U100U-53	3 x french						
	AE-BPW4S100-53	4 x schuko						
	AE-BPW4U100-53	4 x french			-			
CHARGER	AE-BPW1S2UCH-80	1 x schuko	3600 W	-	2 x USB-A	-	150 cm	silver
	AE-BPW1U2UCH-80	1 x french						
CHARGER MINI	AE-BPW1U1UCH-53	1 x french	3600 W	-	1 x USB-A	-	190 cm	silver
	AE-BPW1S1UCH-53	1 x schuko						
SLIDE	AE-BPW1S1UCH-51	1 x schuko	3500 W	-	1 x USB-A	-	190 cm	aluminium
	AE-BPW1U1UCH-51	1 x french						

furniture power socket / charger	indeks	socket type	max permissible load	wireless charger	USB	additional slot	power cord	color
fi 60	AE-BPW3S60-20	3 x schuko	3600 W	-	-	-	150 cm	black
	AE-BPW3S60-80	3 x schuko						silver
	AE-BPW3S60U-20	3 x schuko			2 x USB-A			black
	AE-BPW3S60U-80	3 x schuko						silver
	AE-BPW3U60-20	3 x french			-			black
	AE-BPW3U60-80	3 x french						silver
	AE-BPW3U60U-20	3 x french			2 x USB-A			black
	AE-BPW3U60U-80	3 x french						silver
fi 100	AE-BPW3GS-20	3 x schuko	3600 W	-	-	-	150 cm	black
	AE-BPW3GS-80	3 x schuko						silver
	AE-BPW3GU-20	3 x french						black
	AE-BPW3GU-80	3 x french						silver
SOFT	AE-PBSC3GS-10	3 x schuko	3600 W	-	-	-	150 cm	white
	AE-PBSC3GS-20N	3 x schuko						black
	AE-PBSC3GS-53	3 x schuko						aluminium
	AE-PBSUC2GS-10	3 x schuko			2 x USB-A			white
	AE-PBSUC2GS-20N	3 x schuko						black
	AE-PBSUC2GS-53	3 x schuko						aluminium
	AE-PBSC3GU-10	3 x french						white
	AE-PBSC3GU-20N	3 x french			-			black
	AE-PBSC3GU-53	3 x french						aluminium
	AE-PBSUC2GU-10	3 x french						white
	AE-PBSUC2GU-20N	3 x french			2 x USB-A			black
	AE-PBSUC2GU-53	3 x french						aluminium
	rectangular	AE-PBC3GU-10			3 x french			3600 W
AE-PBC3GU-53		3 x french	aluminium					
AE-PBC3GU-20		3 x french	black					
rectangular	AE-PBU2GU-10	2 x french	3600 W	-	2 x USB-A	-	150 cm	white
	AE-PBU2GU-53	2 x french						aluminium
	AE-PBU2GU-20	2 x french						black
through-desk	AE-PBC3GS-53BKS	3 x schuko	3600 W		-	-	150 cm	aluminium
	AE-PBC3GU-53BKS	3 x french						aluminium
	AE-PBC3GS2U-53BKS	3 x schuko			2 x USB-A			aluminium
	AE-PBC3GU2U-53BKS	3 x french						aluminium
corner	AE-PBKT4S-80	4 x schuko	3600 W	-	-	-	150 cm	silver
	AE-PBKT4U-80	4 x french						silver
	AE-PBKT3S2U-80	3 x schuko			2 x USB-A			silver
	AE-PBKT3U2U-80	3 x french						silver
LUX	AE-ZLADLUX-40	-	-	10 W	-	-	200 cm	chrome
hidden	AE-ZLADPOD-20	-	-	10 W	-	-	150 cm	black
z USB	AE-ZUSB-20	-	-	10 W	1 x USB-A	-	200 cm	black